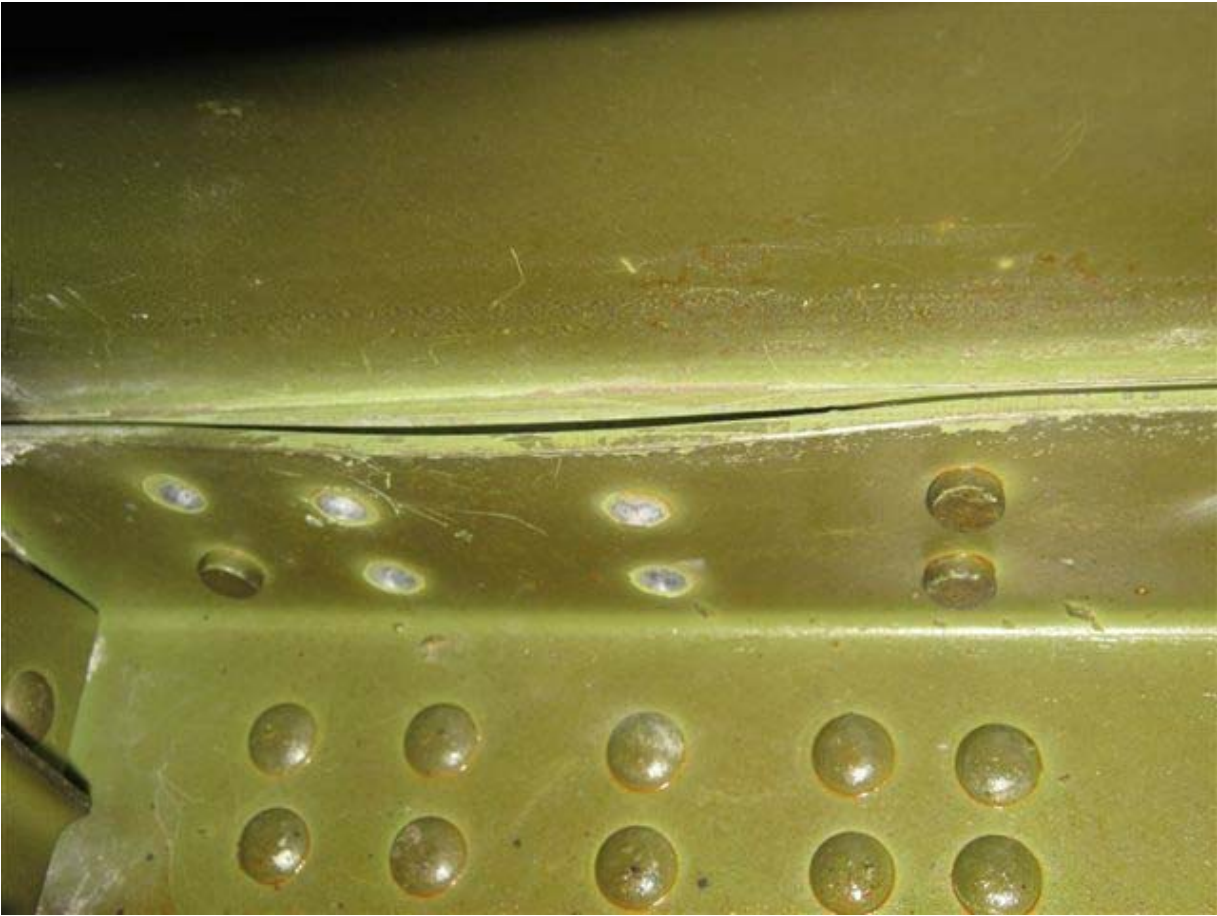


CASA, C212-200 Wing Spar Corrosion, ATA 5711

An Air Carrier technician states, "The left wing, upper forward spar's aft horizontal leg is exfoliated at approximately Wing Station 3496. There is probable exfoliation at WS 2130 to 2450, and at WS 2900 to 3000.



Part Total Time: Unknown

CASA, C212-200 Wing Spar Corrosion, ATA 5711